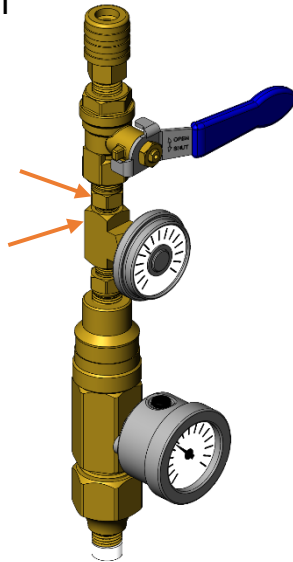


## Wellhead Sampler to IsoSampler Go™ Conversion

### Step 1

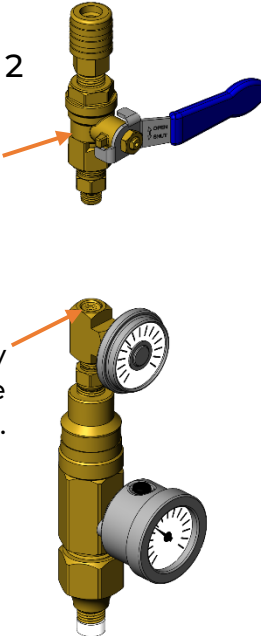
Split the Wellhead Sampler at the 1/8" to 1/4" NPT reducer and the tee.



### Step 2

Discard this assembly.

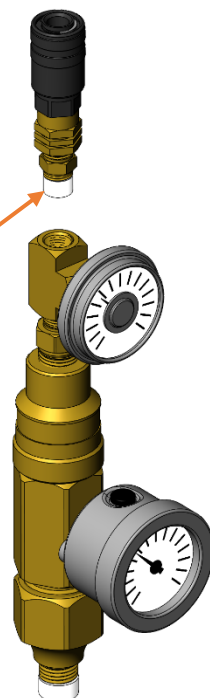
Remove any Teflon® tape remnants.



### Step 3

The IsoSampler Go chuck assembly should have Teflon® tape already applied to the threads.

NOTE: A 1/8" to 1/4" NPT bushing is included for older Wellhead Samplers with 1/4" NPT tees.



### Step 4

Connect the IsoSampler Go chuck assembly to the tee.

